



## Installation Instructions

<b>Model:</b>	Polaris General
<b>Description:</b>	Stage 5 Install
<b>Part Number:</b>	MBQG-STG5-1/MBQG-STG5-RC-1
<b>Assembly Time:</b>	180 Min (3-Hours)

**Before you begin, read through these instructions and check that all parts are present. Always disconnect negative battery terminal prior to installation. Please note that MB Quart cannot assume any responsibility for damage resulting from incorrect installation.**

Parts List		
No.	Component Name	Qty
1	GMR-LED with Housing (MBQG-RAD-1)	1
2	6.5" Dash Speakers (MBQG-FPOD-1)	2
3	6.5" Rear Pod Speakers (NPT1-116BBG)	2
4	10" Subwoofer w/Enclosure (MBQG-SUB-1)	1
5	NA2-400.1 Amplifier	1
6	NA2-500.5 Amplifier	1
7	MBQG-ACC-1	1

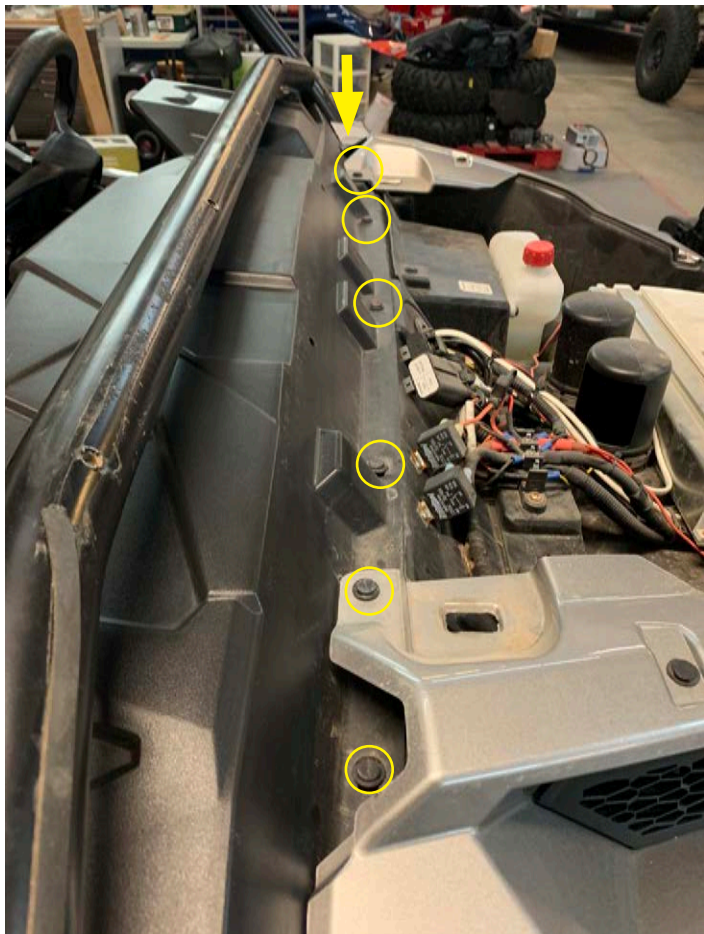
Tools Required	
1	Bojo Tool
2	Panel Clip Pliers
3	10mm & 13mm Socket
4	Ratchet
5	7mm & 13mm Wrench
6	T25 and T40 Torx Driver
7	11/32" Drill Bit
8	Drill
9	Phillips Screwdriver
10	4mm & 5mm Allen Wrench

## Dash Disassembly

- Remove hood by turning two latches



- Remove seven push clips from front of dash

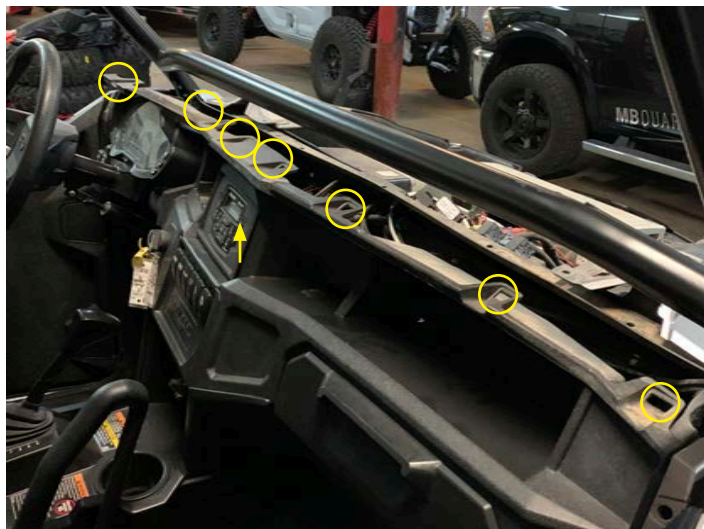


## Dash Disassembly

- Remove top two push pins from driver and passenger door opening



- Lift front of dash at eight locations with Bojo tool



## Dash Disassembly

- Remove if your machine has upper pocket



- Remove lower switch locations (If your vehicle has switches installed note connections and disconnect)



- Disconnect wires from back of 12-volt accessory port



## Dash Disassembly

- Remove plastic nut from ignition switch and remove from dash



- Lower the steering column and disconnect wiring from the back of the instrument cluster and remove the two 10mm bolts to remove the instrument cluster



- Disconnect the connectors from the back of the light and four wheel drive switches



## Dash Disassembly

- Remove two T40 bolts from the instrument cluster pocket



- Remove two T40 bolts in front of the shift knob



- Remove two T40 bolts from inside the glove box

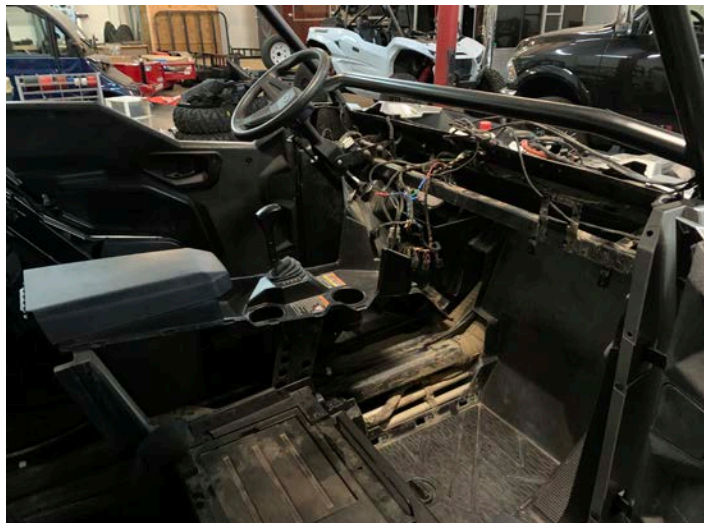


## Dash Disassembly

- Carefully pull dash toward rear of vehicle by door opening on driver and passenger sides



- Carefully remove dash from vehicle by lifting up and out of the vehicle



- Remove seats from vehicle



## Dash Disassembly

- If your General is a 4-seat version continue and if you have a 2-seat skip ahead
- Remove six push pins from the driver and passenger side rear center console



- Remove two push pins under center console lid and lift up center console and disconnect 12-volt accessory port in center console and remove center console from vehicle



- Remove two push pins from lower front center console and remove





## Dash Disassembly

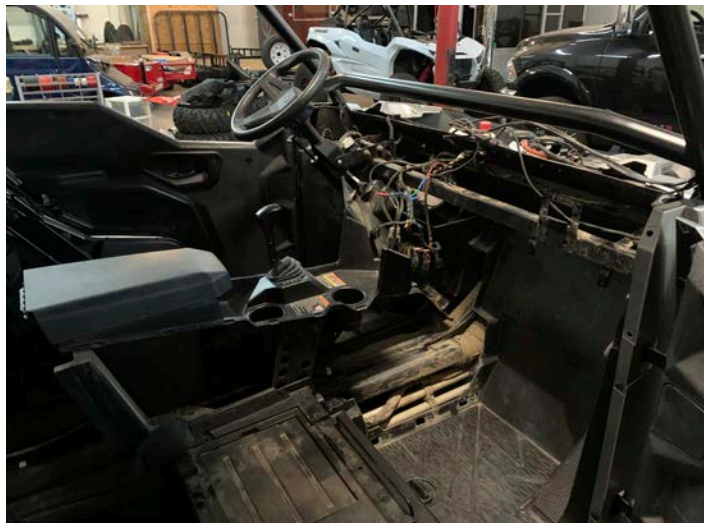
- Remove (4) 13mm bolts and the grab handle



- Remove six push pins and three T40 bolts



- Remove passenger center console side panel

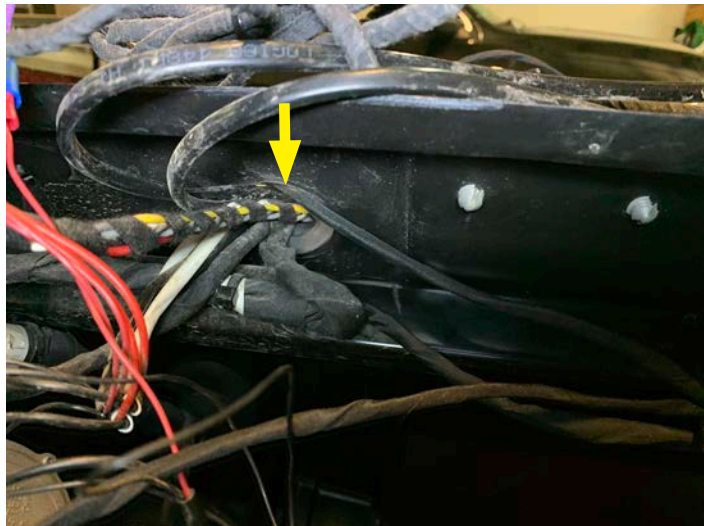


## Harness Installation

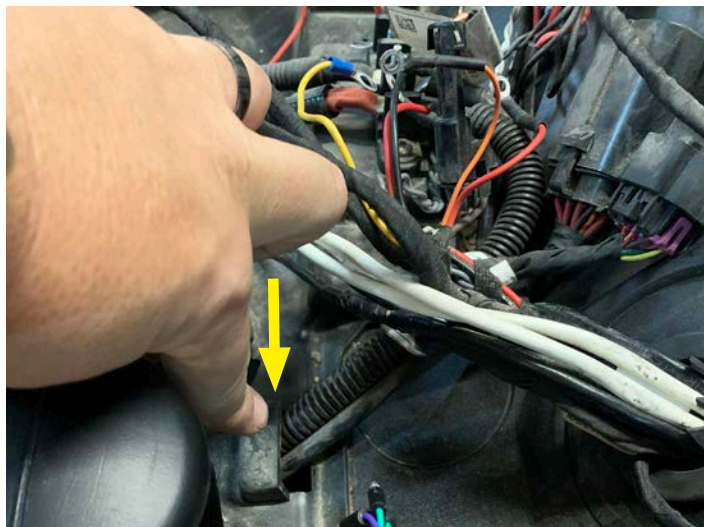
- Temporary zip tie speaker harness as pictured on passenger side



- Route left and right front speaker wires to each appropriate kick area



- Route rear wires out grommet toward under hood area as seen by arrow. (May need to reach from inside console area)



## Harness Installation

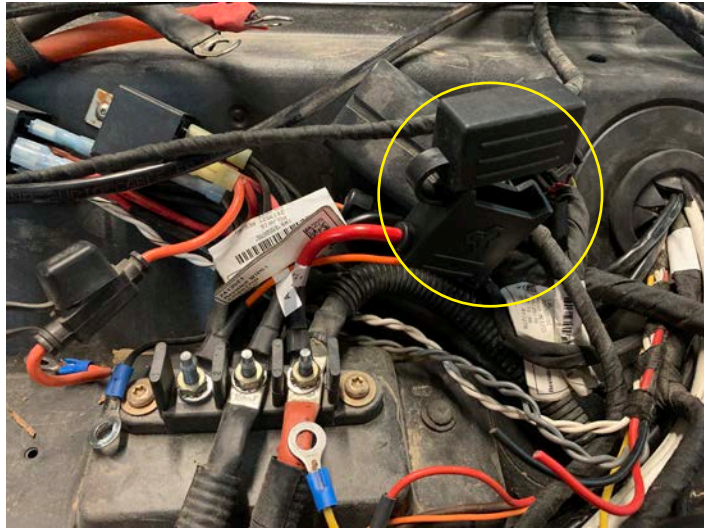
- Zip tie rear speaker harness along power harness in the center console (If you have a four seat, use extension harness to extend to the back of the vehicle)



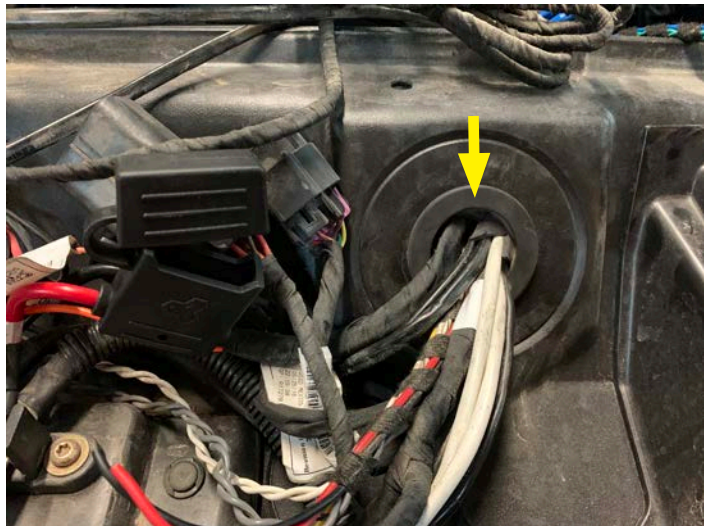
- Remove fuse from the holder and connect power wires to the bus bar

### *Note*

If you have the Pulse connector, remove the ring terminal from the orange wire and connect the three position connector to plug into an open spot on the Pulse block

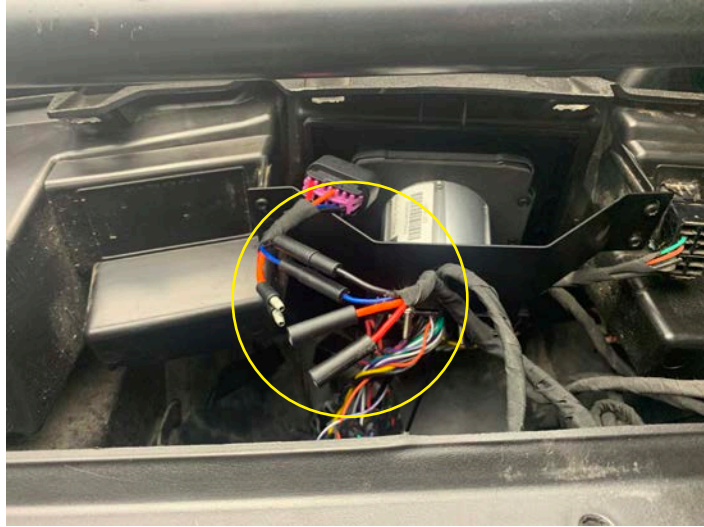


- Remove Delphi connector at bullet and pass these wires along with the amplifier connector from hood area to the inside through the grommet



## Harness Installation

- Connect Delphi harness connector back to appropriate wire



## Front Speaker Pod Install

- Temporarily place dash in vehicle and do NOT secure into place



- Connect speaker wires and then hold passenger side pod up high to the dash till it slides into place and using 11/32" drill bit, drill the four holes and secure with four push pins



- Repeat on the driver side and drill the five lower holes with 11/32" drill bit and secure with five push pins



## Front Speaker Pod Install

- Remove the dash and connect each pod to the speaker harness routed earlier

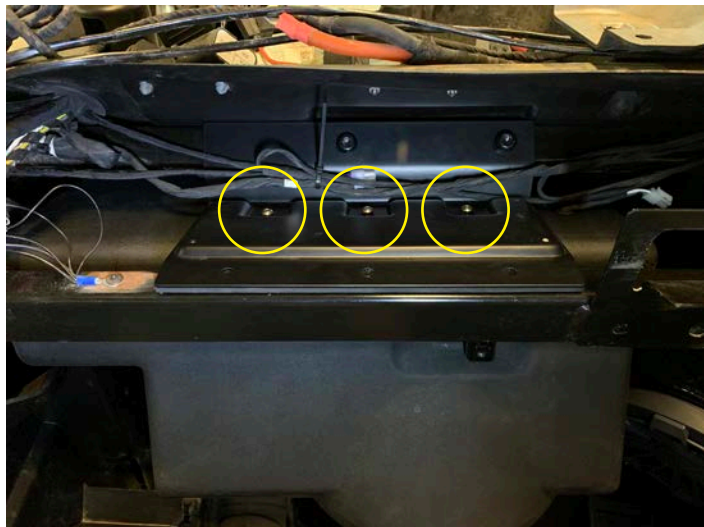


## Subwoofer Enclosure Install

- Install amplifier plate using two T40 self cutting screws into the two existing holes circled. You may have to remove a wire clip if present and leave screws loose till another step where we will tighten up



- Rotate enclosure toward bracket lifting upward and using a 4mm allen wrench loosely install the three M5 button head bolts with thread patch to the top of the enclosure

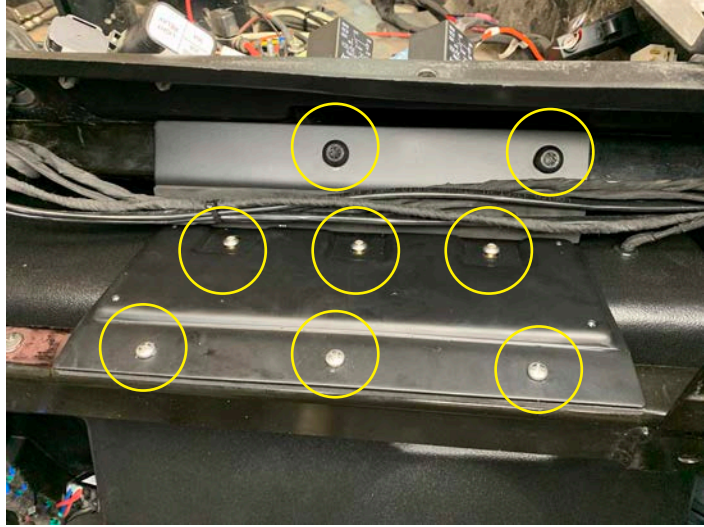


- Rotate enclosure toward bracket lifting upward and using a 4mm allen wrench loosely install the three M5 button head bolts with thread patch to the top of the enclosure



## Subwoofer Enclosure Install

- Tighten three M5 bolts on top of enclosure with a 4mm allen wrench and also tighten two T40 Torx bolts and three Phillips self tapping screws on the front of the plate



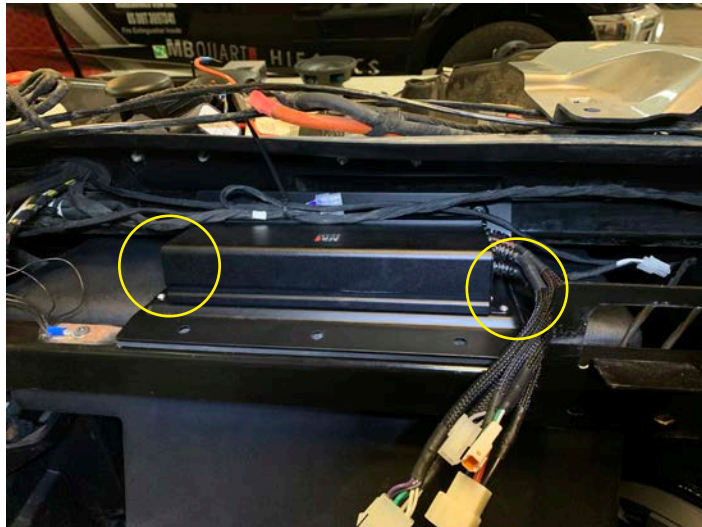


## Amplifier Install

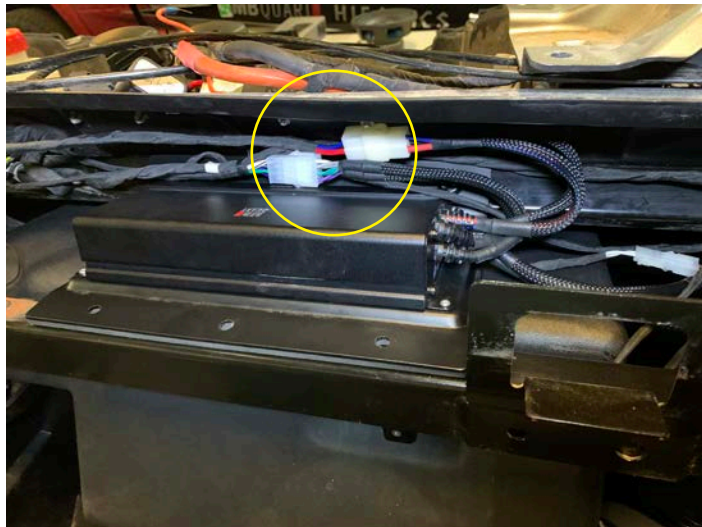
- Adjust amplifier gain and crossover as pictured



- Use four M3 Philips screws to secure amplifier to plate and position gain / crossover facing toward center of vehicle

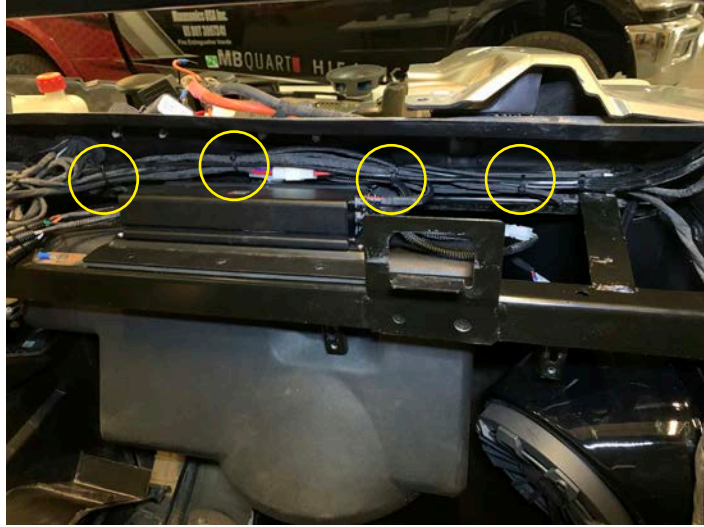


- Connect Power, Subwoofer, Speaker, and RCA pigtail connectors (Note – Bass knob can be connected if wanted but the GMR-LED has subwoofer level control)



## Amplifier Install

- Zip tie wires to secure

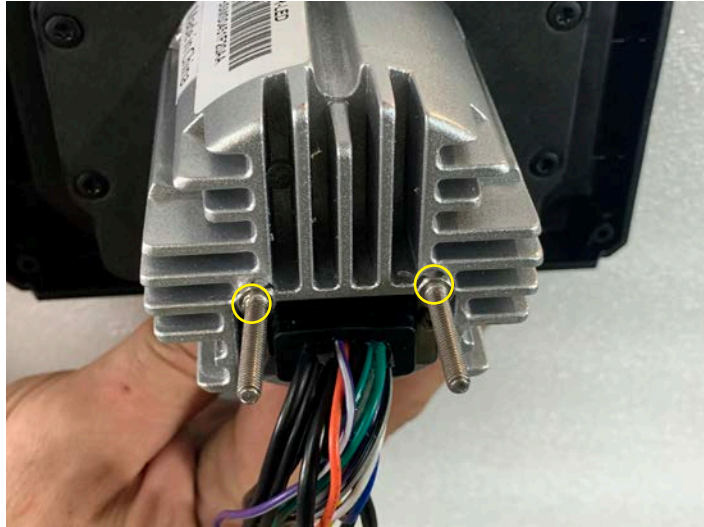


## Radio Install

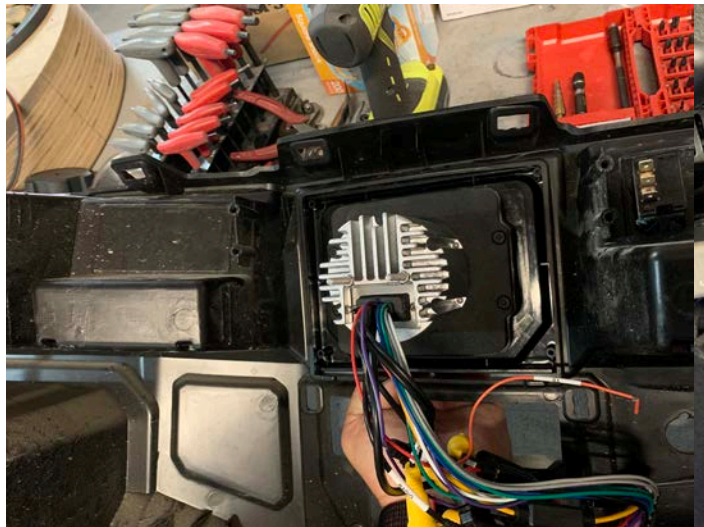
- Install two double threaded bolts in back of radio with 7mm wrench

### *NOTE*

Disregard if you have Ride Command



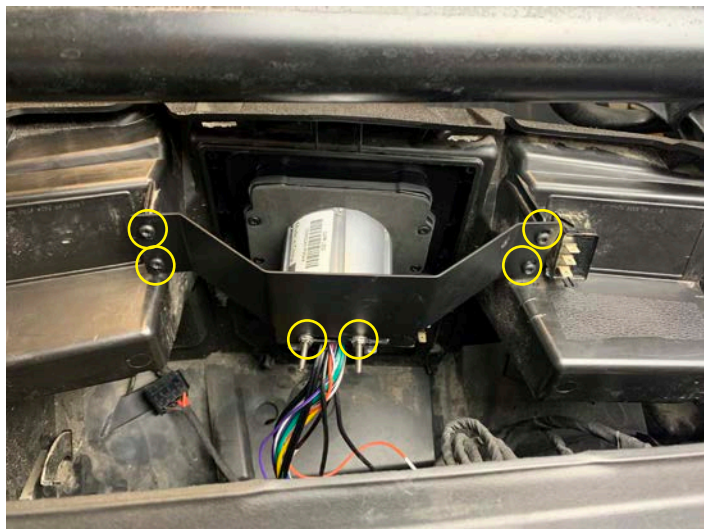
- Place radio and dash kit from the front side of the dash



- Position rear bracket and loosely install the two nuts on back of radio

Loosely install four High-Low threadforming screws with a T25 Torx

Position radio in opening moving left and right, and up and down, once happy, tighten the nuts on the back of the radio with a 7mm wrench and T25 Torx on the bracket



## Radio Install

- On lower switch panel remove one of the two hole plugs beside the 12-volt accessory port



- Install the USB / AUX port in this hole (PASP-18)



## Rear Speaker Install

- Attach the left and right harness to bullet connectors in the center console and route these to the left and right side of the vehicle staying clear of moving and hot parts



- Install speaker to bracket with four M6 Button head bolts using a 4mm Allen wrench and then position bracket on the ROPS with four M8 bolts, eight M8 washer and four M8 locknuts securing with a 5mm Allen wrench and 13mm socket



- Inside bracket should have groove facing toward center of vehicle



## Rear Speaker Install

- Connect wiring



## Reassembly

- Install front passenger center console, carefully sliding into place around subwoofer enclosure



- Install six push pins

### *NOTE*

The two up high by firewall will need to be inserted from drivers side by steering wheel



- Install three T40 bolts



## Reassembly

- Install passenger grab handle with four 13mm bolts



- Install center cover with two push pins



- If two-seat skip ahead, If four- seat then install rear console and install six push pins on driver and passenger side





## Reassembly

- Install rear glove box in rear center console (Remember to connect wires to bottom 12-volt accessory port)



- Install two push pins under glove box lid

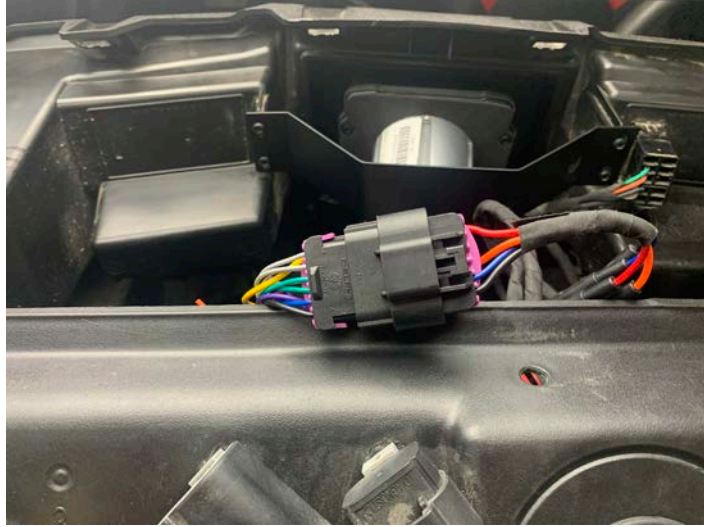


- Re-install the dash in the vehicle



## Reassembly

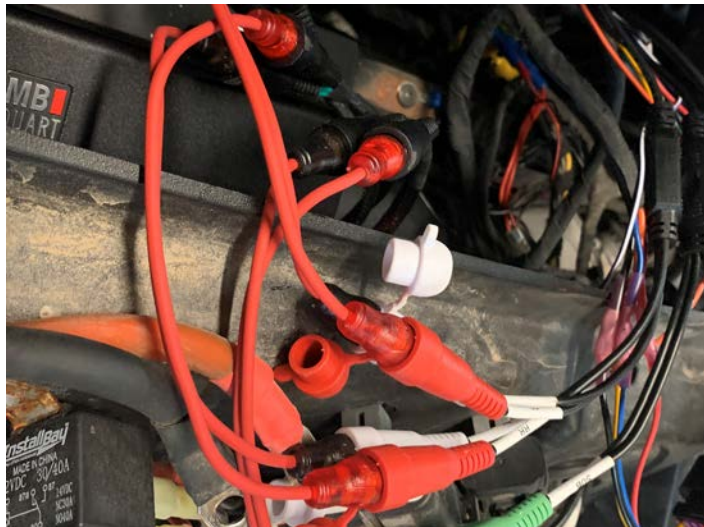
- Connect the radio harness to the power harness



- Connect the RCA input from the amplifier to the RCA output of the radio with the three 6" RCAs.

### *Note*

White RCA from amplifier goes to front left RCA of radio  
Gray RCA from amplifier goes to front right RCA of radio  
Green RCA from amplifier goes to rear left RCA of radio  
Violet RCA from amplifier goes to rear right RCA of radio  
Brown and Orange RCA from amp goes to green RCA of radio



- Install main fuse under hood



## Reassembly

- Turn vehicle on and do a preliminary test of the audio to see if all speakers are performing.

(If testing is good, continue assembly)



- Install key switch and align to detent



- Install two T40 bolts on driver side instrument cluster area



## Reassembly

- Install two T40 bolts in center console



- Install two T40 bolts in passenger glove box



- Install instrument cluster with two 10mm bolts



## Reassembly

- Connect instrument cluster connector



- Connect switches, 12-volt accessory port, and connect USB / AUX port to radio then snap center section to dash



- Install top of dash, snapping eight push clips on front of dash

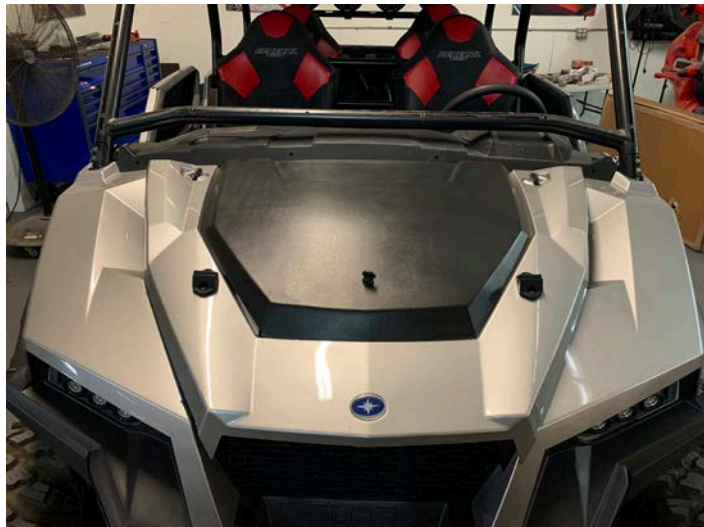


## Reassembly

- Install six push pins on front of dash



- Install hood





#### FCC Notice

This equipment has been tested and found to comply with the limits for a Class B digital device, pursuant to part 15 of the FCC Rules. These limits are designed to provide reasonable protection against harmful interference in a mobile installation. This equipment generates, uses and can radiate radio frequency energy and, if not installed and used in accordance with the instructions, may cause harmful interference to radio communications. However, there is no guarantee that interference will not occur in a particular installation.

WARNING: Changes or modifications not expressly approved by the party responsible for compliance could void the user's authority to operate the equipment.

This equipment complied with FCC radiation exposure limits set forth for an uncontrolled environment. This equipment should be installed and operated with minimum distance 20cm between the radiator & your body.

#### WARRANTY

Maxxsonics USA Inc. warrants this product, to the original consumer purchaser, to be free from defects in material and workmanship for a period of one (1) year from the date of purchase. Maxxsonics USA Inc. will, at its discretion, repair or replace defective products during the warranty period. Components that prove to be defective in materials and workmanship under proper installation and use must be returned to the original authorized Maxxsonics USA Inc. retailer from where it was purchased. A photocopy of the original receipt must accompany the product being returned. The costs associated with removal, re-installation and freight are not the responsibility of Maxxsonics USA Inc. This warranty is limited to defective parts and specifically excludes any incidental or consequential damages connected therewith. To view the full warranty, please visit the website.

The Bluetooth® word mark and logos are registered trademarks owned by the Bluetooth SIG, Inc. and any use such marks by MB Quart is under license.

All product names, logos, and brands are property of their respective owners. All company, product and service names used in this literature are for identification purposes only. Use of these names, logos, and brands does not imply endorsement.

©2021 Maxxsonics USA, Inc.

MBQuart products are designed and engineered in the USA by



MBQG-STG5-1/MBQGG-STG5-RC-1 REV 01