



Installation Instructions

| | |
|-----------------------|-------------------|
| Model: | Honda Talon |
| Description: | Stage 2 Install |
| Part Number: | MBQT-STG2-RAD-1 |
| Assembly Time: | 120 Min (2-Hours) |

Before you begin, read through these instructions and check that all parts are present. Always disconnect negative battery terminal, prior to installation. Please note that MB Quart cannot assume any responsibility for damage resulting from incorrect installation.

| Parts List | | |
|------------|-----------------------------------|-----|
| No. | Component Name | Qty |
| 1 | GMR-LED with Housing (MBQT-RAD-1) | 1 |
| 2 | 6.5in Dash Speakers (MBQT-FPOD-1) | 2 |
| 3 | NA2-400.2 | 1 |
| 4 | MBQT-ACC-1 | 1 |

| Tools Required | |
|----------------|------------------------------------|
| 1 | Bojo Tool |
| 2 | Panel Clip Pliers |
| 3 | 10mm open box wrench |
| 4 | 10mm and 12mm socket |
| 5 | ½" socket |
| 6 | Ratchet |
| 7 | Small flat head screwdriver |
| 8 | Phillips screwdriver |
| 9 | 3mm and 5mm Allen Wrench |
| 10 | ¼" and ½" drill bit or stepper bit |
| 11 | 1" hole saw |
| 12 | Drill |
| 13 | Rotary tool similar to a Dremel |
| 14 | Heat Gun or Lighter |
| 15 | Crimper |

Disassembly

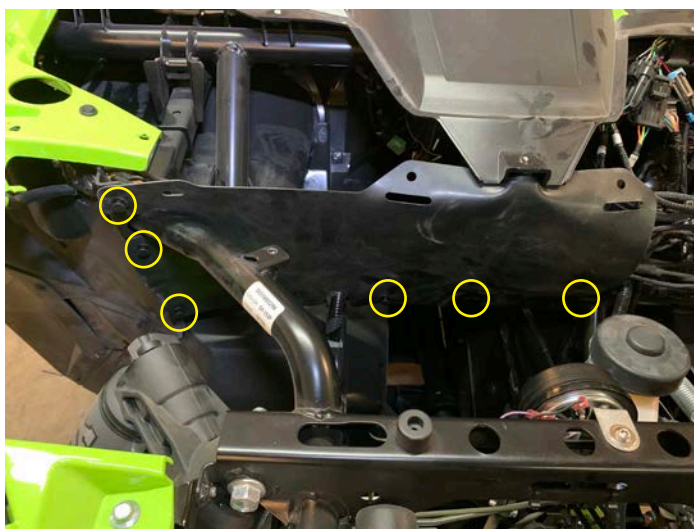
- Remove hood by turning two latches



- Remove four 10mm bolts, four push pins, and five 5mm allen bolts to remove top of dash



- Remove half mud guard with six push pins



Disassembly

- Lift up the bottom half of the steering column rubber boot



- Remove the two push pins behind the rubber boot



- Remove the two push pins on the bottom of steering column cover



Disassembly

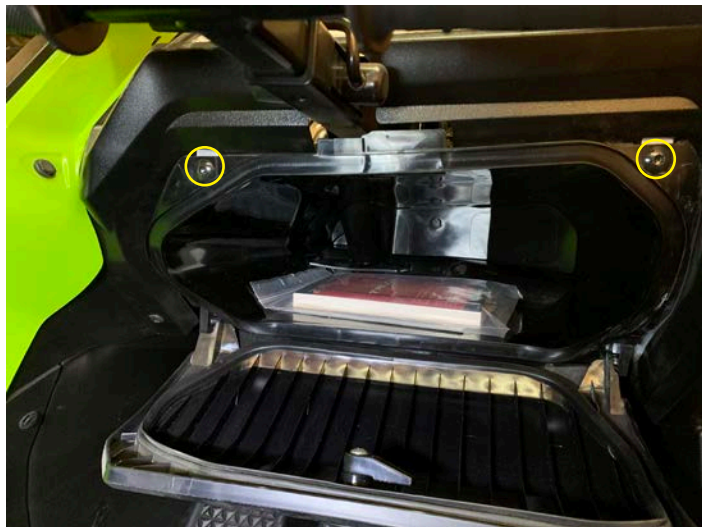
- Remove the bottom steering wheel cover



- Remove one 5mm allen bolt and one push pin from the drivers kick area

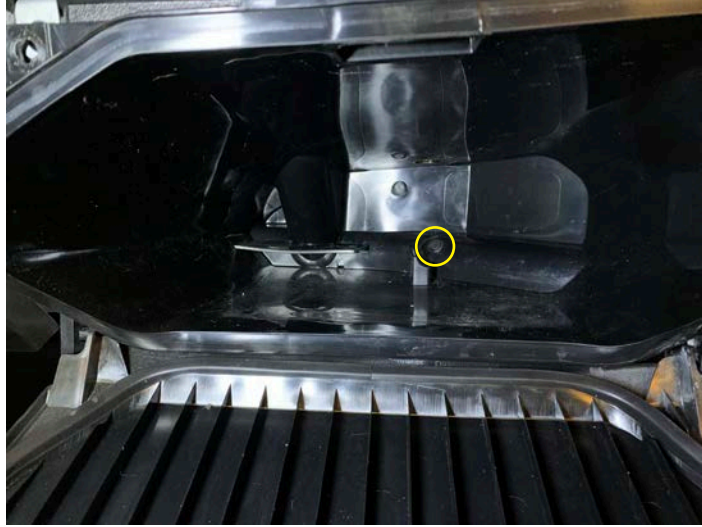


- Remove two 5mm allen bolts from behind glove box door



Disassembly

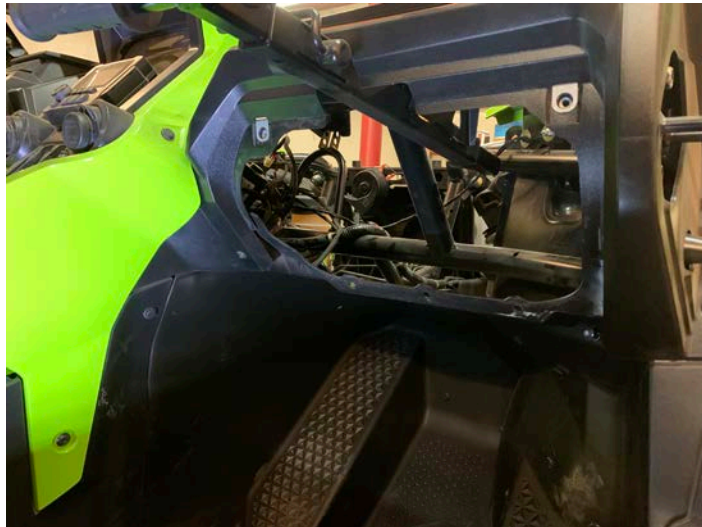
- Remove one push pin in the back of the glove box



- Remove three push pins from below the glove box



- Remove glove box



Disassembly

- Remove one 5 mm allen bolt and one push pin from passenger kick area



Front Speaker Pod Installation

- Drill a ½" hole, 5/8" down from the edge and 2 ¼" over (Control the depth of bit to not go too deep)



- Pass the wire from the driver side pod through the hole you drilled



- Position pod and lightly thread a 5/16" bolt and washer from the front fender area into the threaded insert on the back of the pod



Front Speaker Pod Installation

- Install the M6 x 40mm bolt and washer through the enclosure into the factory bolt location



- Tighten the 5/16" bolt in the fender area



- Repeat previous steps on passenger side



Radio & Dash Kit Installation

- Place the metal u-bracket at the top of the pocket and mark the bottom portion to be cut out with a rotary tool



- Drill two 1/4" holes using the u-bracket as a guide in the back of the pocket



- Install two 5mm allen bolts through the bracket and pocket and install a flat washer and lock nut (You may need to ask a friend for help or can reach on both sides of the dash to tighten)



Radio & Dash Kit Installation

- Slide the dash panel with the bevel and MB Quart logo facing outward like the image



- Pass the wires from the radio through the hole below the u-bracket in the pocket



- Install four M4 cap head bolts through the face of the radio and dash into the u-bracket and tighten



Radio & Dash Kit Installation

- Install covers on each side of radio



Amplifier Adjustment

- Adjust the NA2-400.2 amplifier gain and crossover settings as pictured

NOTE

Gains all to the last "L" on Level
HPF to 100Hz going just past "P" on LP
LPF is turned all the way down
X-Over to HP

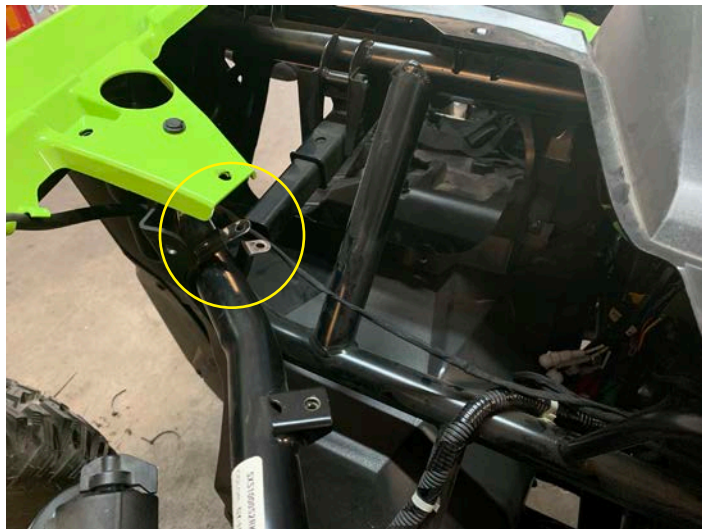


Amplifiers and Plate Installation

- Install the NA2-400.2 amplifier as pictured with four M4 Philips screws, washers, and lock nuts



- Install the rubber c-clamp around the tube as pictured

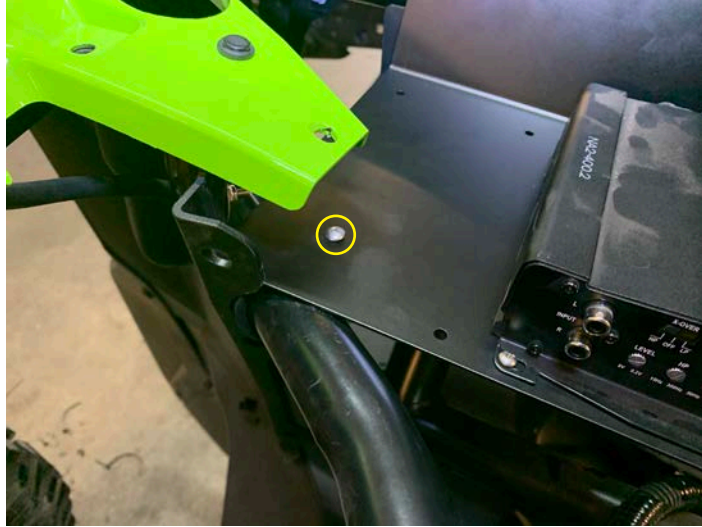


- Slide the top amplifier mount between the frame and top of dash as pictured



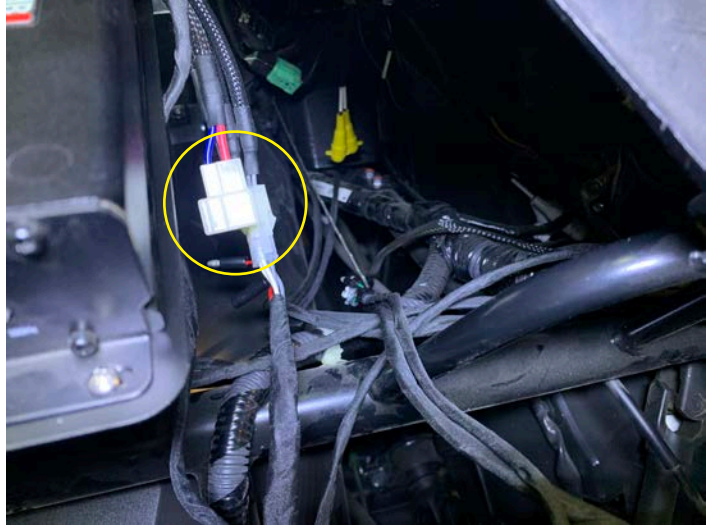
Amplifiers and Plate Installation

- Install the M6 button head bolt through the plate and c-clamp attaching from the bottom with a washer and lock nut

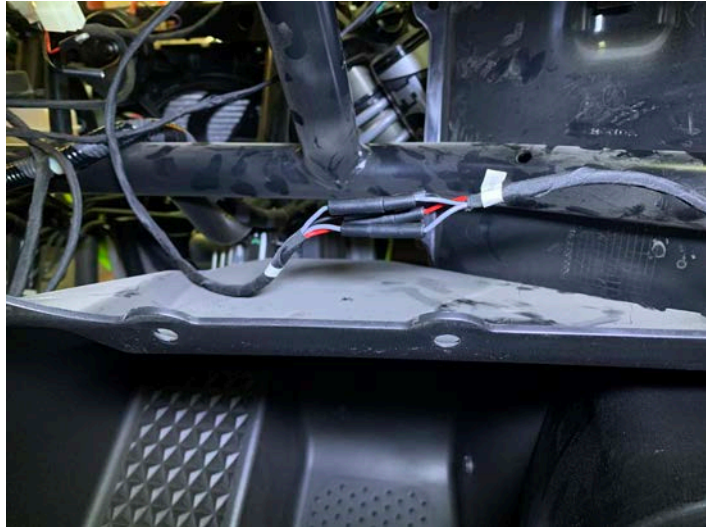


Wiring Installation

- Connect the speaker harness to the NA2-400.2 amplifier and route the driver and passenger speaker leads to the appropriate kick area

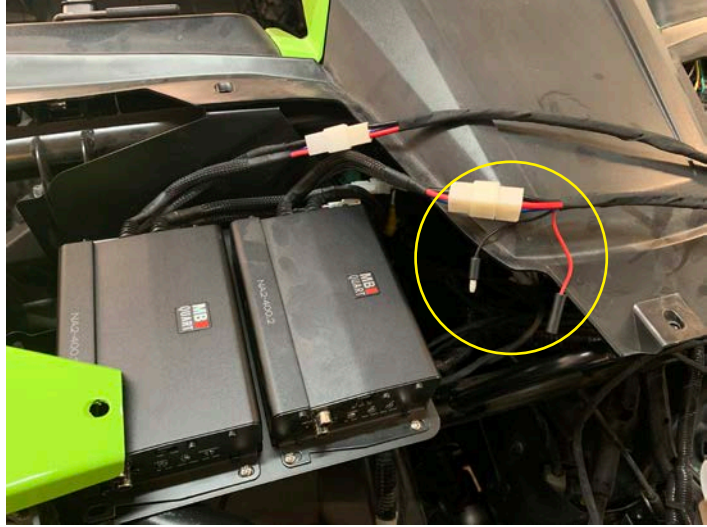


- Connect bullets of amplifier harness with respective front kick pods

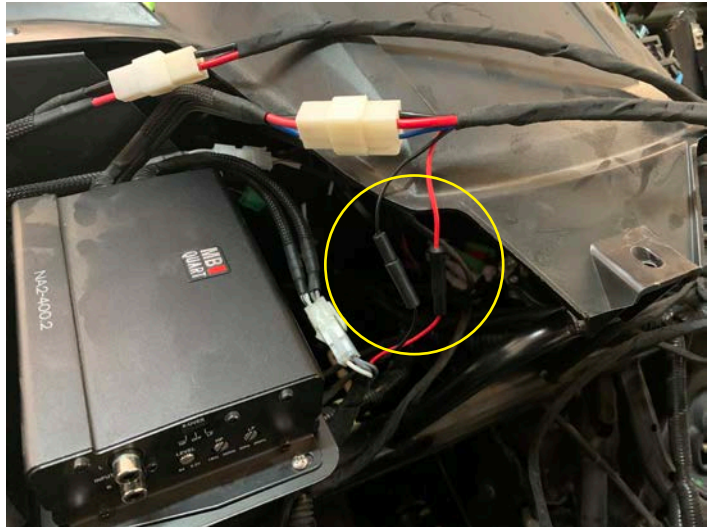


Wiring Installation

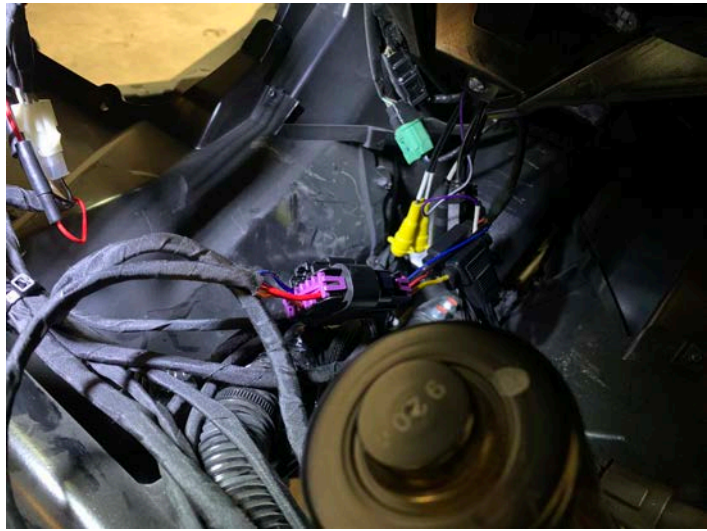
- Install power harness to each amplifier (Connector with bullets connects to NA2-400.2)



- Connect bullets from power harness to speaker harness (This is if you want to add optional LED rings at the speaker locations)



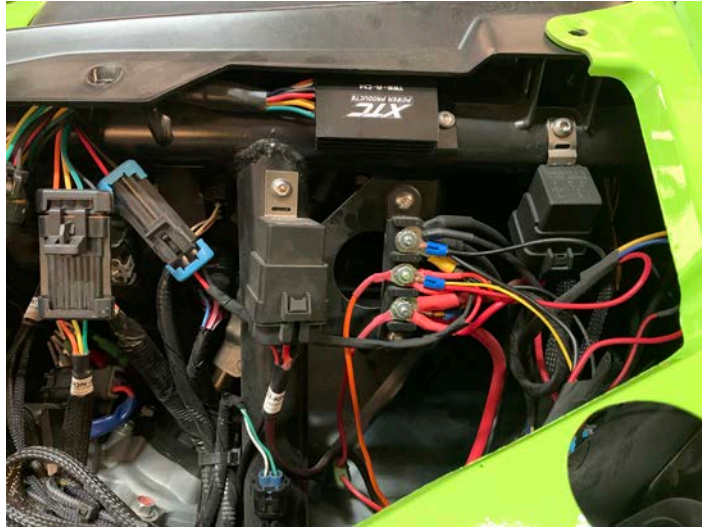
- Connect Delphi connector on power harness into the radio harness



Wiring Installation

- If you don't already have a buss bar installed you can connect to factory wiring (but we highly recommend a buss bar kit)

These are available from many aftermarket companies like XTC Power Products



- Plug RCA into the NA2-400.2 and run to the front RCA outputs of the radio

Wiring Installation

- Drill a 1" hole in the side of the glovebox 3" from the front for the USB / AUX Port



- Place the glove box back in the vehicle (we will install hardware during assembly portion of the manual)



- Install the USB / Aux port into the 1" hole in the glove box and slide the rubber washer and nut on the backside and tighten. Then connect the RCAs and USB from the USB / Aux port to the back of the radio

Reassembly

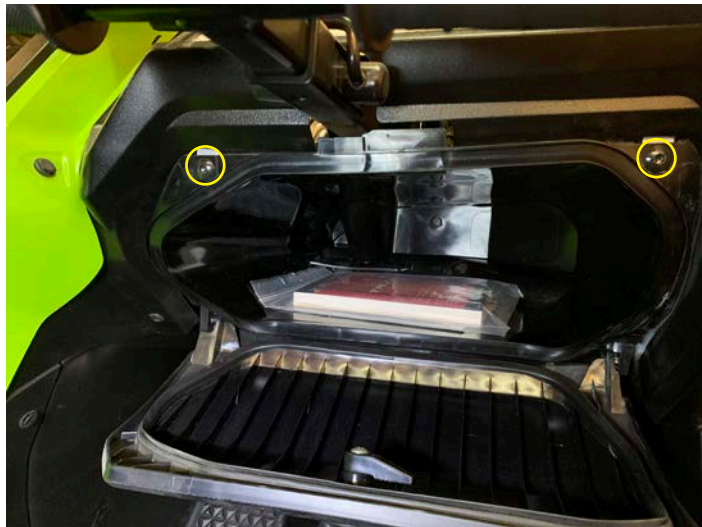
- Install three push pins from below the glove box



- Install one push pin in the back of the glove box



- Install two 5mm allen bolts from behind glove box door

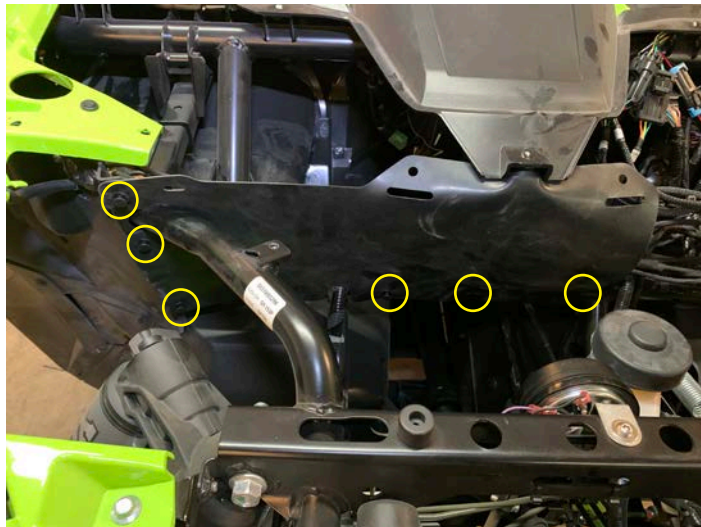


Reassembly

- Install the bottom steering wheel cover



- Install new full mud guard with kit with 6 push pins previously removed and 8 new push pins in kit



- Install four 10mm bolts, four push pins, and five 5mm allen bolts to remove top of dash



Reassembly

- Install hood by turning two latches





FCC Notice

This equipment has been tested and found to comply with the limits for a Class B digital device, pursuant to part 15 of the FCC Rules. These limits are designed to provide reasonable protection against harmful interference in a mobile installation. This equipment generates, uses and can radiate radio frequency energy and, if not installed and used in accordance with the instructions, may cause harmful interference to radio communications. However, there is no guarantee that interference will not occur in a particular installation.

WARNING: Changes or modifications not expressly approved by the party responsible for compliance could void the user's authority to operate the equipment.

This equipment complied with FCC radiation exposure limits set forth for an uncontrolled environment. This equipment should be installed and operated with minimum distance 20cm between the radiator & your body.

WARRANTY

Maxxsonics USA Inc. warrants this product, to the original consumer purchaser, to be free from defects in material and workmanship for a period of one (1) year from the date of purchase. Maxxsonics USA Inc. will, at its discretion, repair or replace defective products during the warranty period. Components that prove to be defective in materials and workmanship under proper installation and use must be returned to the original authorized Maxxsonics USA Inc. retailer from where it was purchased. A photocopy of the original receipt must accompany the product being returned. The costs associated with removal, re-installation and freight are not the responsibility of Maxxsonics USA Inc. This warranty is limited to defective parts and specifically excludes any incidental or consequential damages connected therewith. To view the full warranty, please visit the website.

The Bluetooth® word mark and logos are registered trademarks owned by the Bluetooth SIG, Inc. and any use such marks by MB Quart is under license.

All product names, logos, and brands are property of their respective owners. All company, product and service names used in this literature are for identification purposes only. Use of these names, logos, and brands does not imply endorsement.

©2021 Maxxsonics USA, Inc.

MBQuart products are designed and engineered in the USA by



www.maxxsonics.com